

# Bituthene<sup>®</sup> 8000



Advanced, self-adhesive, water, moisture and gas proofing membrane for sub-structures

## Product Description

Bituthene<sup>®</sup>8000 combines the proven Bituthene adhesive technology with a unique, grey-coloured carrier film to provide superior performance and easier installation. It can be used horizontally or vertically to protect basements and other critical sub-structures from the effects of water, damp and gas penetration.

Bituthene 8000 has been tested to withstand more than 70m head of water and is over 90 times more methane resistant than the BRE minimum recommendation.

The membrane is printed with the Bituthene logo to aid identification plus an overlap line at each edge to ensure the 50 mm minimum laps. Bituthene 8000 is extremely tough but any accidental damage which would otherwise be missed, is made visible by the black compound showing through the light grey film. This can be simply repaired with a patch of Bituthene 8000.

## Product Advantages

- Water and moisture proof — provides protection for Grades 2, 3 and 4 BS 8102:1990.
- Gas resistant — protects against methane and radon.
- Superior performance — 70m hydrostatic pressure resistance with ultra low moisture transmission rate.
- Non-metallised film — not vulnerable to chemical attack; eliminates overbanding of laps associated with aluminium based membranes.
- Wide application “window” reduces delays — application temperature range from -10°C to +35°C and damp surface tolerant.
- Easier handling in warm weather — over 20% reduction of solar heat absorption.
- Unique composite film — engineered for strength, flexibility and a smooth finish.
- Facilitates Quality Assured installation — printed overlap line ensures minimum laps; light colour highlights accidental damage for simple patch repairs.
- System Compatibility — can be combined with Preprufe<sup>®</sup> pre-applied membranes, Bituthene<sup>®</sup> Liquid Membrane, and Hydroduct<sup>®</sup> for system solutions.

## Performance

| PROPERTY                    | TYPICAL VALUE  | TEST METHOD |
|-----------------------------|----------------|-------------|
| Thickness*                  | 1.5mm          | -           |
| Hydrostatic Head Resistance | > 70m (note 1) | ASTM D5385  |

|                                      |   |   |
|--------------------------------------|---|---|
| Water Vapour<br>Transmission<br>Rate | 0.06g.m <sup>2</sup> /day   | ASTM E96  |
| Methane<br>Permeability              | 3.89mL / m <sup>2</sup> /day<br>(note 2)  | Queen mary &<br>Westfield College,<br>University of<br>London |
| Tensile Strength<br>(Carrier Film)   | Longitudinal 48.4 N/<br>mm <sup>2</sup><br>Transverse 45.4N/<br>mm <sup>2</sup> | ASTM D638   |
| Puncture<br>Resistance               | 280N  | ASTM E154   |
| Radon<br>Transmission                | 6 x 10 <sup>-9</sup> m.s <sup>-1</sup>  | S.P. Institute,<br>Sweden                                     |

\* Nominal thickness refers to the thickness of the membrane without release liner.

Note 1: Test carried out on an overlap crossing a post formed crack.

Note 2: Typical value for BRE recommended minimum standard (BRE Report 212) is 360 mL / m<sup>2</sup>/day.

Typical Test Values may represent average values from samples tested. Test Methods noted may be modified.

Bituthene 8000 complies with the relevant section of the following national standards: BS 8102:1990, Building Regulations (England and Wales) 1991 (amended 1994) clause C4. Building Regulations (Northern Ireland) 1994 (amended 1995) clause B2. Building Standard (Scotland) Regulations 1990, Regulation B2.1, G2.6.

## Supply

|                            |  |
|----------------------------|--|
| Bituthene 8000             | 1m x 20m roll (20sq m)<br>Weight 39kg  |
| Storage                    | Store upright in dry conditions below +35 °C   |
| Primer B2                  | 25 litre drums   |
| Coverage                   | 6 ~ 8 sq metre per litre depending upon method of application, surface texture, porosity and ambient temperature |
| <b>Ancillary Products</b>  |  |
| Bituthene LM               | 5.7 litre packs  |
| Lap Roller                 | Unit   |
| Bituthene Protection Board | 3mm x 1m x 2m  |
| Adcor 500S                 | 6m x 5m rolls  |
| Bitustik                   | 150mm x 12m roll   |

Hydroduct

See separate Drainage Sheets

## Repairs

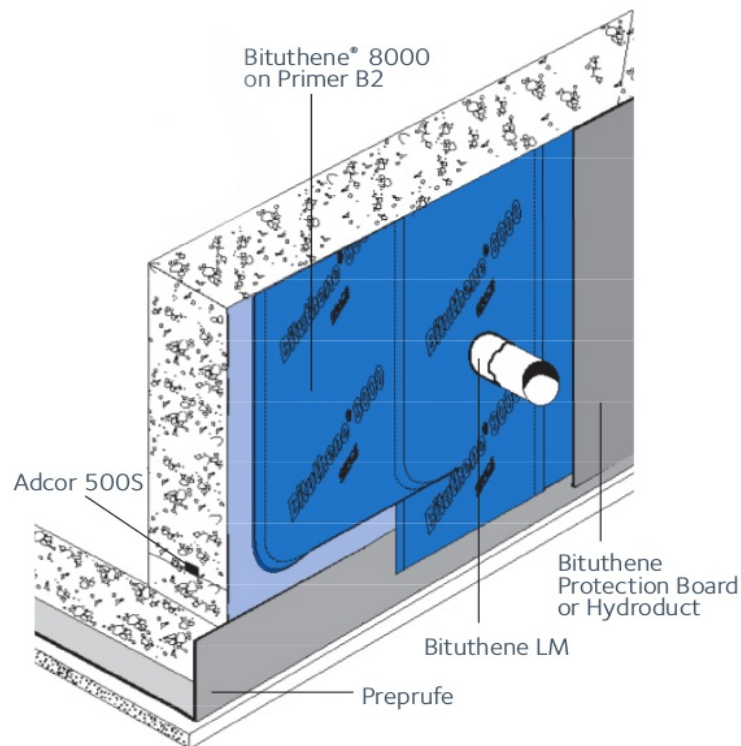
Damaged areas to be repaired by patching with an oversized patch applied to a clean, dry surface extending 100mm beyond damage and firmly rolled.

## Specification

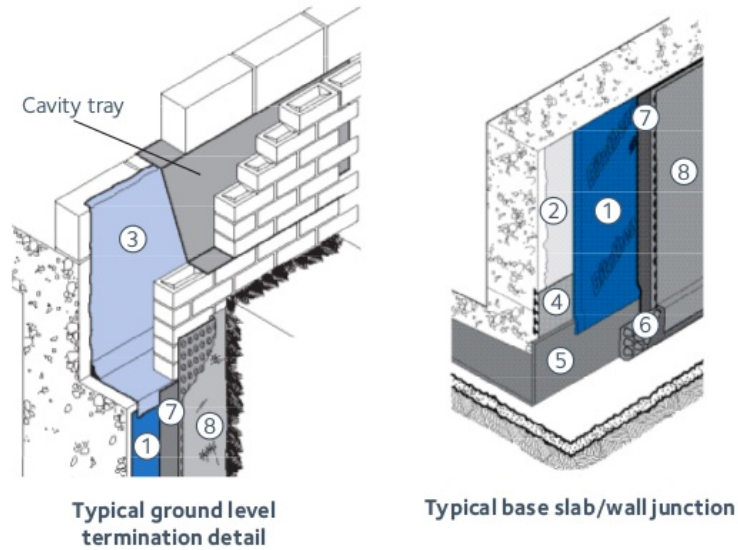
Bituthene 8000 preformed membrane with Bituthene LM at corners shall be laid onto smooth concrete blinding and/or vertical concrete walls by applying the preformed membrane, sticky side downwards to give well rolled 50mm overlaps. Vertical or inclined surfaces and suspended slabs to be primed with Primer B2 applied by roller or brush to achieve an even cover of the surface. Allow to dry before applying the membrane.

## Technical Services

For assistance with working drawings for projects and additional technical advice, please contact GCP Applied Technologies.



## Ancillary Products



## Primer B2

Primer B2 is used to prepare vertical and sloping surfaces and suspended slabs. It is moisture tolerant and can be used on “green” concrete or damp to touch substrates.

- 1 Bituthene®8000
- 2 Primer B2
- 3 Bituthene LM
- 4 Serviseal®Waterstop
- 5 Preprufe®
- 6 Hydroduct®Coil
- 7 Bituthene Protection Board
- 8 Hydroduct 200

## Bituthene LM

Waterproof continuity at angles and at penetrations is provided by Liquid Membrane, chemically curing, liquid-applied detailing compound.

## Bituthene Protection Board

Damage from following trades is prevented by laying Servipak non-compressive rot proof boards spot bonded with Pak Adhesive or Bitustik™. Vertical faces are protected against backfilling by using Servipak, Hydroduct or other boards recommended by GCP, bonded with Bitustik double sided tapes.

## Installation

At air temperatures below +4°C measures should be taken to ensure that all surfaces are free from ice or frost. All surfaces except those below ground bearing slabs should be primed with one coat of Primer B2 applied at a rate of 8m<sup>2</sup> / litre. Bituthene 8000 shall be laid by peeling back the protective release paper and applying the adhesive face onto the prepared surface, free from ice, frost or condensation. Bituthene LM to be applied at all internal and external corners, penetrations etc. prior to applying the overall membrane. Bituthene 8000 should be brushed onto the surface to ensure good initial bond and exclude air. Adjacent rolls are aligned using printed lines and overlapped 50mm minimum at side and ends and well rolled with a firm pressure, using a Lap Roller to ensure complete adhesion and continuity between the layers. On high walls it may be necessary to batten fix the membrane to prevent slippage.

## Health And Safety

Refer to relevant Material Safety Data Sheets.

[gcpat.com](http://gcpat.com) | For technical information: [asia.enq@gcpat.com](mailto:asia.enq@gcpat.com)

We hope the information here will be helpful. It is based on data and knowledge considered to be true and accurate, and is offered for consideration, investigation and verification by the user, but we do not warrant the results to be obtained. Please read all statements, recommendations, and suggestions in conjunction with our conditions of sale, which apply to all goods supplied by us. No statement, recommendation, or suggestion is intended for any use that would infringe any patent, copyright, or other third party right.

Bitustik, Bituthene, Preprufe, Hydroduct, Servidrain and Servipak are trademarks, which may be registered in the United States and/or other countries, of GCP Applied Technologies, Inc. This trademark list has been compiled using available published information as of the publication date and may not accurately reflect current trademark ownership or status.

© Copyright 2017 GCP Applied Technologies, Inc. All rights reserved.

GCP Applied Technologies Inc., 62 Whittemore Avenue, Cambridge, MA 02140, USA.

GCP Applied Technologies Holdings (Thailand) Limited, 848 Moo 2 Bangpoo Industrial-Estate (North), Phraksa Mai, Muang, 10280 SAMUTPRAKARN, Bangkok.

This document is only current as of the last updated date stated below and is valid only for use in Thailand. It is important that you always refer to the currently available information at the URL below to provide the most current product information at the time of use. Additional literature such as Contractor Manuals, Technical Bulletins, Detail Drawings and detailing recommendations and other relevant documents are also available on [www.th.gcpat.com](http://www.th.gcpat.com). Information found on other websites must not be relied upon, as they may not be up-to-date or applicable to the conditions in your location and we do not accept any responsibility for their content. If there are any conflicts or if you need more information, please contact GCP Customer Service.

Last Updated: 2020-03-04

[th.gcpat.com/solutions/products/bituthene-post-applied-waterproofing/bituthene-8000](http://th.gcpat.com/solutions/products/bituthene-post-applied-waterproofing/bituthene-8000)