

# Bituthene<sup>®</sup> 6000

Heavy duty, preformed composite membrane combining a self-adhesive rubber/bitumen compound and a tough, puncture-resistant 4 ply polyethylene waterproof laminate for waterproofing critical sub-structures and civil works

---

## Product Description

Bituthene<sup>®</sup>6000 is ideal for waterproofing structural concrete and civil works such as airports, rapid transit systems, power plants, environmental projects and earth sheltered structures and may be used in lieu of Bituthene 3000 on basements and substructures that require extra tough waterproofing protection.

## Features

- Waterproof — capable of resisting a hydrostatic head when fully supported.
- Cross laminated — provides dimensional stability, high tear strength, puncture and impact resistance.
- Single layer — simple, reliable, low labour cost with benefit of site programmed installation.
- Cold applied — no heating, self-adhesive overlaps ensure continuity.
- Chemically resistant — provides effective external protection against aggressive soils and ground water.
- Flexible — accommodates minor settlement and shrinkage movement.
- Controlled thickness — factory-made sheet ensures constant, non-variable site application.
- Tanking security — combined flexible membrane and waterstop system for security.

## Applications

Bituthene 6000 is a heavy duty, advanced, cold applied, flexible preformed waterproof membrane combining a special high performance 4 ply cross-laminated, HDPE carrier film with a self-adhesive rubber bitumen compound. The heavy duty advanced carrier film is manufactured by cross laminating and chemically bonding the layers together, to produce a film with greatly improved physical characteristics compared with traditional low density polyethylene films. Tear strength, puncture resistance and impact resistance are all increased to give a better factor of safety against accidental damage. When used in conjunction with Preprufe<sup>®</sup> membranes in reverse tanking applications and waterstops, cast into the concrete shell, it will provide a continuous waterproofing/ tanking system for sub-structures and civil works.

It is supplied to sites in rolls 1.6mm thick, 1m wide and 20m long (20 sq metres) and is unrolled sticky side down on to primed concrete slabs or vertical concrete faces. Continuity is achieved by overlapping 50mm and firmly rolling the joint. A guideline is printed on the membrane.

Applied to walls and to underground roof slabs, Bituthene 6000 will provide a continuous heavy duty moisture-waterproof barrier.

Being factory made, thickness of membrane is constant throughout and is not subjected to variations by site labour such as occur with brush applied materials. Bituthene 6000 is extremely flexible and well capable of bridging shrinkage cracks in the concrete and will accommodate minor differential movement throughout the service life of the structure.

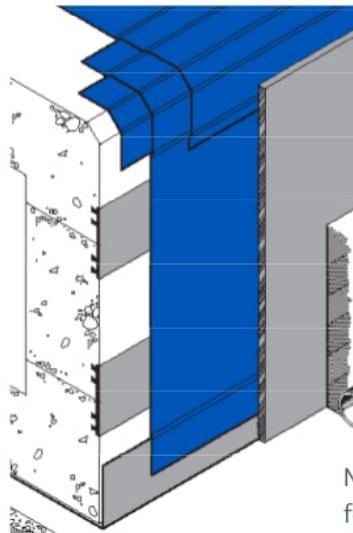
Bituthene membranes should never be taken through load bearing brick/blockwork walls and must be linked with the damp-proof course to prevent extrusion under load.

## Performance

### Bituthene 6000 Typical Performance Properties

PROPERTY	TYPICAL VALUES	TEST METHOD
Colour	Dark Grey / Black	N/A
Tensile Strength (Film Only)	7N / mm	ASTM D412*
Tape Strength	10N / mm	ASTM D412
Elongation of Membrane (To Ultimate Failure of Rubberised Asphalt)	150%	ASTM D412*
Lap Adhesion @ 23oC	683N / m	ASTM D1876
Cycling Over Crack @ -32aC	no effect 100 cycles	ASTM C836
Puncture Resistance	400 N	ASTM E154*
Resistance to Hydrostatic Head	60m	ASTM D5385
Tear Resistance>	36N / mm	ASTM D624
Permeance	1.3ng / m <sup>3</sup> .s.Pa	ASTM E96 [12]

\* Typical values may represent average values from samples tested. Test methods may be modified.



NOTE: See Preprufe® data sheet for waterproofing under slabs and vertical reverse tanking applications

## Installation

Sloping or vertical faces shall be smooth, regular, dry and free from nails and primed with one coat of Primer WP-3000 applied by brush or roller, at a rate of 12 ~ 15 sq metre / litre depending on the porosity of the surface, and allowed to dry completely before the application of the Bituthene. Brickwork shall be flush pointed or rendered to provide a smooth surface before priming.

Where Bituthene is to be left temporarily exposed on vertical surfaces, batten fixing may be necessary to prevent slippage. Prior to backfilling remove battening and cover fully with a subsequent layer of Bituthene.

Bituthene 6000 shall be laid by peeling back the protective release paper and applying the adhesive face onto the prepared surface. The material should be brushed onto the surface to ensure good initial bond and exclude air. Adjacent rolls are aligned and overlapped 50mm minimum at side and ends and well rolled with a firm pressure using a Bituthene Lap Roller to ensure complete adhesion and continuity between the layers. Damaged areas to be repaired by patching with an oversized patch applied to a clean dry surface and firmly rolled.

Following the application, care should be taken to prevent damage by following trades by using Servipak boards spot bonded with Pak Adhesive or a 25mm screed as horizontal protection. Vertical faces to be protected against damage from backfilling and reinforcement by using Servipak or Korkpak spot bonded with Pak adhesive. Backfill material should be compacted in layers to prevent settlement and dragging forces being transferred to the waterproofing systems

## Supply

Bituthene 6000	1m x 20m roll (20 sq m) Average net weight 40kg
Storage	Store upright in dry conditions below 35 °C
Primer WP-3000	18.9 litre pails
Coverage	12 ~ 15 sq metre per litre depending on method of application, surface texture, porosity and ambient temperature
Bituthene LM	5.7 litre pails
Bituthene Mastic	850cc cartridges / 3 litre pails
Bituthene Lap Roller	Unit

## Complementary Materials

Servipak, Servipak SA protection boards: See separate data sheet for details

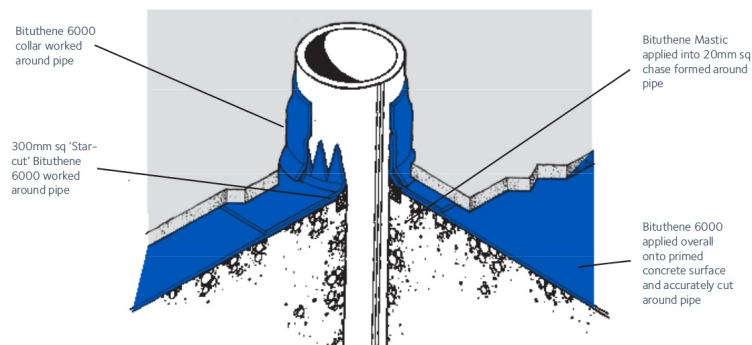
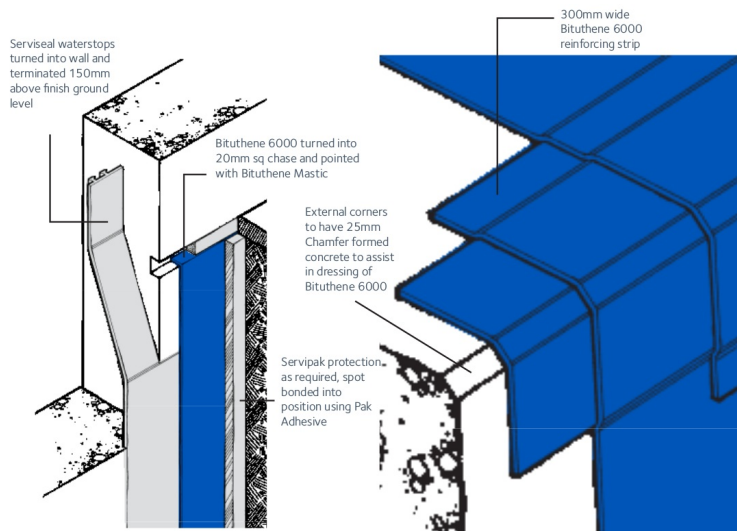
Pak Adhesive: See separate data sheet for details

Serviseal, PVC Edgetie, and Servitite waterstops: See separate data sheet for details

Preprufe 160R and 300R: See separate data sheet for details

## Equipment by Others

Soft broom, Stanley knife, brush or roller for priming.



### Pipe through Slabs

A similar detail to this can also be used for pipes through walls

## Quality Assurance

GCP Applied Technologies is certified to ISO 9001 : 2008 by TUV SUD PSB Pte Ltd.

## Health and Safety

Refer to relevant Material Health and Safety data sheets.

## Flat Deck Waterproofing

Bituthene 6000 is suitable for use as a primary waterproofing membrane on a protected roof structure. Refer to Flat Deck Protection section.

## Specification

Bituthene 6000 preformed membrane shall be applied onto smooth primed concrete by applying the preformed membrane, sticky side downwards to give well rolled 50mm overlaps, laid strictly in accordance with manufacturer's instructions and supplied by GCP Applied Technologies. For further information, contact your local GCP representative.

## Technical Services

For assistance with working drawings for projects and additional technical advice, please contact GCP Applied Technologies.

[gcpat.com](http://gcpat.com) | For technical information: [asia.enq@gcpat.com](mailto:asia.enq@gcpat.com)

We hope the information here will be helpful. It is based on data and knowledge considered to be true and accurate, and is offered for consideration, investigation and verification by the user, but we do not warrant the results to be obtained. Please read all statements, recommendations, and suggestions in conjunction with our conditions of sale, which apply to all goods supplied by us. No statement, recommendation, or suggestion is intended for any use that would infringe any patent, copyright, or other third party right.

Bituthene and Preprufe are trademarks, which may be registered in the United States and/ or other countries, of GCP Applied Technologies, Inc. This trademark list has been compiled using available published information as of the publication date and may not accurately reflect current trademark ownership or status.

© Copyright 2020 GCP Applied Technologies, Inc. All rights reserved.

GCP Applied Technologies Inc., 62 Whittemore Avenue, Cambridge, MA 02140, USA

GCP Applied Technologies Holdings (Thailand) Limited., 848 Moo 2, Bangpoo Industrial Estate (North), Phraksa Mai, Muang Samutprakarn, Samutprakarn 10280, Thailand

This document is only current as of the last updated date stated below and is valid only for use in Thailand. It is important that you always refer to the currently available information at the URL below to provide the most current product information at the time of use. Additional literature such as Contractor Manuals, Technical Bulletins, Detail Drawings and detailing recommendations and other relevant documents are also available on [www.th.gcpat.com](http://www.th.gcpat.com). Information found on other websites must not be relied upon, as they may not be up-to-date or applicable to the conditions in your location and we do not accept any responsibility for their content. If there are any conflicts or if you need more information, please contact GCP Customer Service.

Last Updated: 2021-02-05

[th.gcpat.com/solutions/products/bituthene-post-applied-waterproofing/bituthene-6000](http://th.gcpat.com/solutions/products/bituthene-post-applied-waterproofing/bituthene-6000)